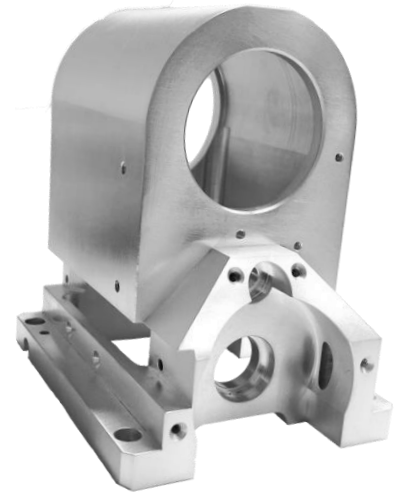


PRECISION MACHINING

JARS Inc. is an AS9100 certified precision manufacturing company specializing in CNC machining of common and special alloys such as:

- Stainless Steel
- Titanium alloys
- Molybdenum
- Aluminum
- Ceramics
- Inconel
- Magnesium
- Copper Alloys
- Engineered Plastics
- Phenolics



MANUFACTURING CAPABILITIES

JARS provides various turning and milling operations from small to large components. Additional services are offered to supply a complete part like:

- Laser Marking
- Anodizing
- Broaching
- Heat Treat
- Engraving
- Grinding
- Gear Cut
- Passivation
- Plating
- Honing
- EDM

We are constantly investing in our equipment and staff to further expand our capabilities and to meet our customers' wide variety of specifications and requirements.

MARKETS SERVED

JARS manufactures a wide range of products in various industries including:

- Aerospace flight critical components
- Space exploration
- Defense
- Automation and Robotics
- Energy
- Medical
- Automotive
- Measurement and Testing





Our mission is to be your most trusted partner and reliable source for your machining needs

OUR COMMITMENT TO TOTAL CUSTOMER SATISFACTION

Our history of delivering high quality machined parts to satisfied customers requiring high quality and on-time delivery is a testament to our commitment to serving our customer's needs. What sets us apart is our nimbleness and ability to listen, understand and focus on what is important to each of our customers.



PROTOTYPE TO PRODUCTION

JARS works with customers during the prototype stages to find the best and most economic manufacturing process to meet production needs. Our goal is to understand your design, application, project timeline, inspection and packaging requirements and target cost.

QUALITY AND TOLERANCES

We regularly hold tolerances to less than ± 0.001 " and can hold tolerances as tight as ± 0.0002 ". Inspection is performed on all manufactured lots using precision instruments like automatic OMM/CMM measuring equipment with zoom capability greater than 600x, along with various measuring instruments that are calibrated periodically to ensure all products meet customer specifications and requirements prior to shipping.

